



\$ 849,000

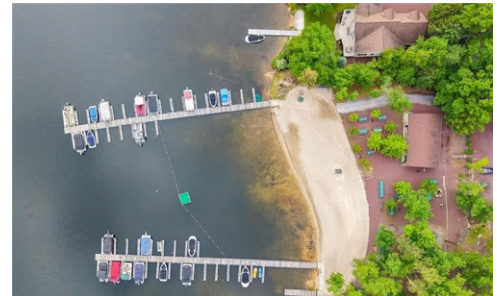
OPEN HOUSE
7/11/2026 11:00 - 2:00



TOTAL: 5533 sq. ft.
FLOOR 1: 1676 sq. ft., FLOOR 2: 2027 sq. ft., FLOOR 3: 1384 sq. ft.
EXCLUDED AREAS: GARAGE: 448 sq. ft., SFP WINDOW: 15 sq. ft., LOW CEILING: 104 sq. ft.,
OPEN TO BELOW: 382 sq. ft., BR: 400 sq. ft.

493 Lake Drive, Nesquehoning Borough, PA 18240

- » Beds: 4 | Baths: 3 Full, 1 Half
- » MLS #: 776873
- » Single Family | 5,533 ft²
- » More Info: 493Lake.IsForSale.com



Kristen Obert
(610) 973-3710
marketing@homespotmedia.com



Iron Valley Real Estate Northeast
3295 Forest Inn Rd. Suite 8
Palmerton, PA 18071
(484) 223-8936

Remarks

Just in time to enjoy the Lake Life that makes Lake Hauto so special in One of Carbon County's Most Exclusive Residential Communities. Imagine spending your summer days boating, tubing, kayaking, fishing, or simply relaxing on the pristine 330-acre spring-fed motorboat lake while taking advantage of the community's private beaches, tennis and basketball courts, and year-round events that make this one of the area's most sought-after communities. Nestled on a picturesque 1-acre lot adjoining more than 100 acres of preserved association land, this stunning 4-bedroom, 3.5-bath log home offers the perfect blend of luxury, warmth, and privacy. From the moment you step inside, you are welcomed by a breathtaking great room with soaring cathedral ceilings, floor-to-ceiling windows that bring the outdoors in, and a striking double-sided custom fireplace that creates the perfect gathering space. Designed with both everyday living and entertaining in mind, the chef's kitchen features a commercial-grade gas range, center island, and spacious walk-in pantry with laundry. The main-floor primary suite provides a peaceful retreat with private access and a spa-like atmosphere. Unstairs, a loft overlooks the great room and leads to generously sized secondary bedrooms, while the fully finished lower

